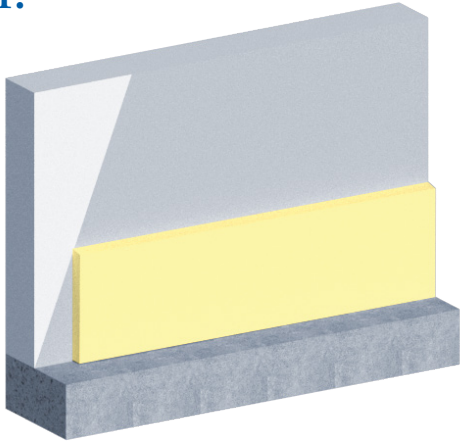


Termination Bar Extender

Installation Instructions Board Insulation

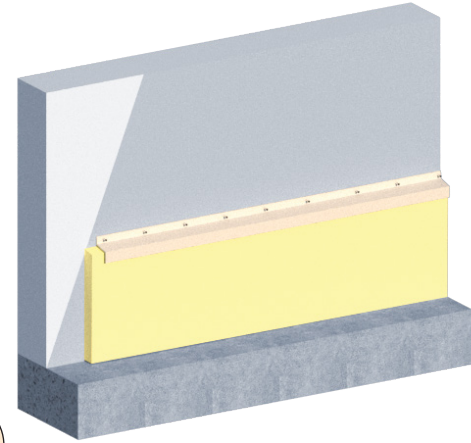
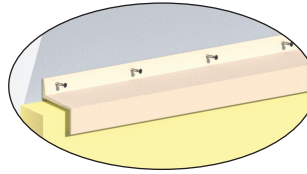
1:



Determine the height you want your flashing to be and install your insulation just below this location.

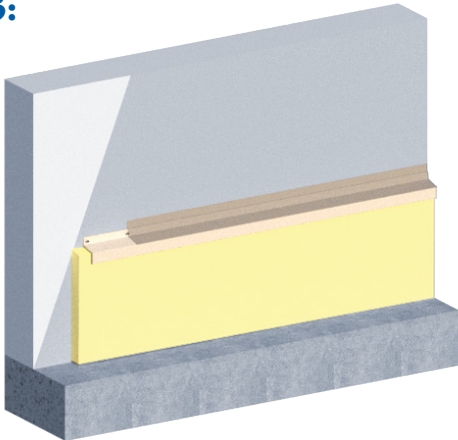
2:

Secure the Termination Bar Extender to the backup wall and fasten through the top leg every 8".

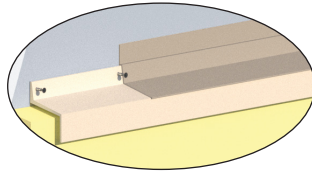


Steel Studs: Use blocking to attach in between the studs

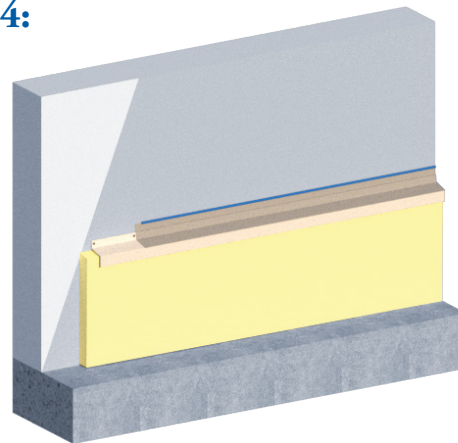
3:



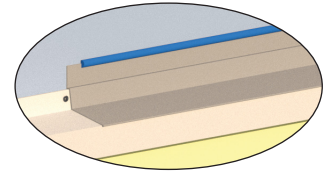
Install the MaxSeal transition membrane starting from the outer horizontal edge of the Termination Bar Extender.



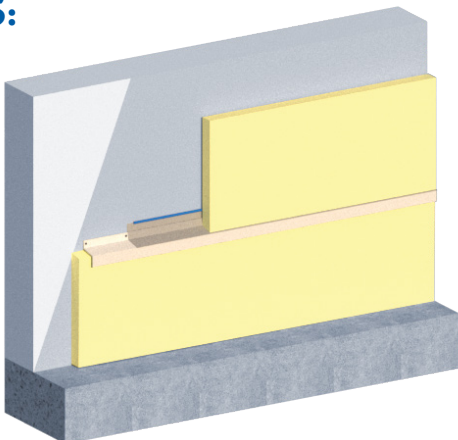
4:



Use a compatible sealant or T-96 Termination Bar to terminate the MaxSeal transition membrane.

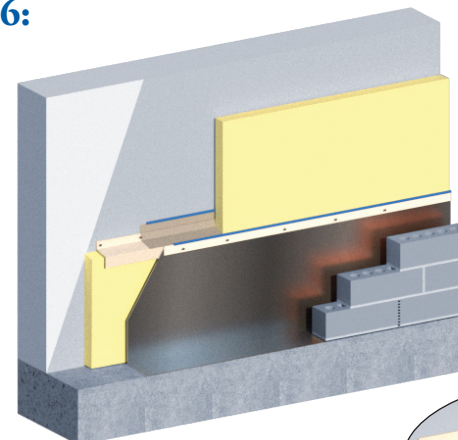


5:



Install insulation on top of the Termination Bar Extender.

6:



Install your desired TWF on the downward leg of the Termination Bar Extender using a flat Termination Bar.

Fasten every 8" on center and seal the flat termination bar with a compatible sealant

