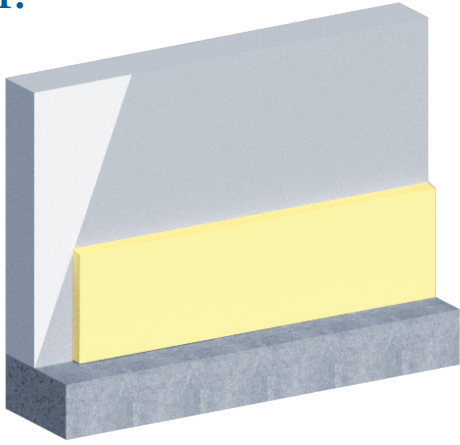


# Termination Bar Extender

## Installation Instructions Board Insulation

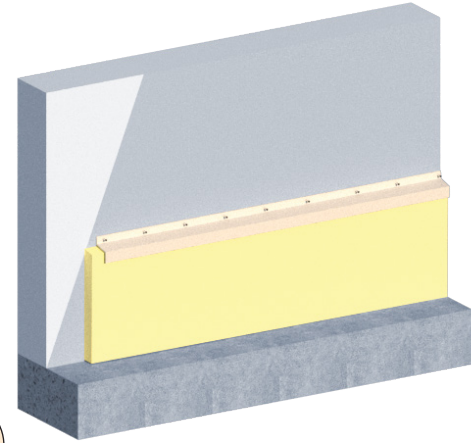
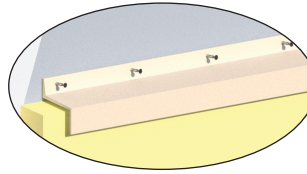
1:



Determine the height you want your flashing to be and install your insulation just below this location.

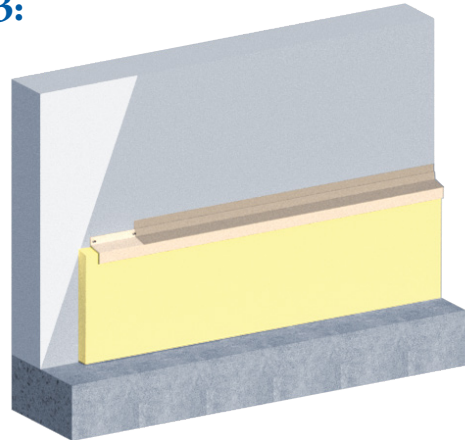
2:

Secure the Termination Bar Extender to the backup wall and fasten through the top leg every 8".

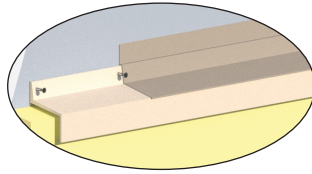


Steel Studs: Use blocking to attach in between the studs

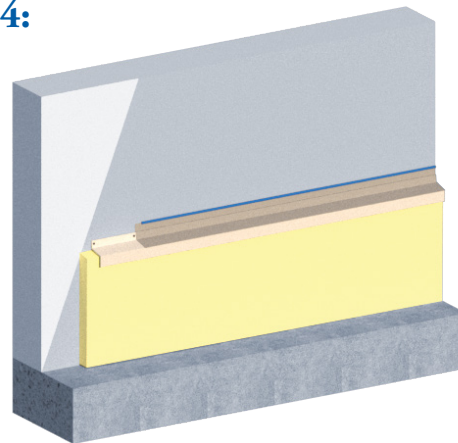
3:



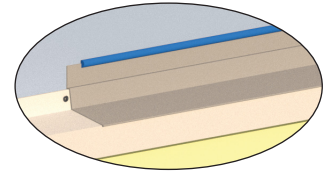
Install the MaxSeal transition membrane starting from the outer horizontal edge of the Termination Bar Extender.



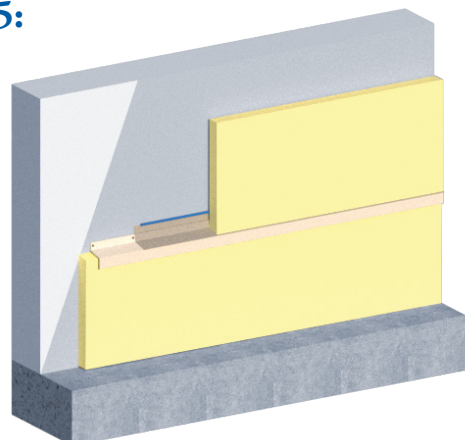
4:



Use a compatible sealant or T-96 Termination Bar to terminate the MaxSeal transition membrane.

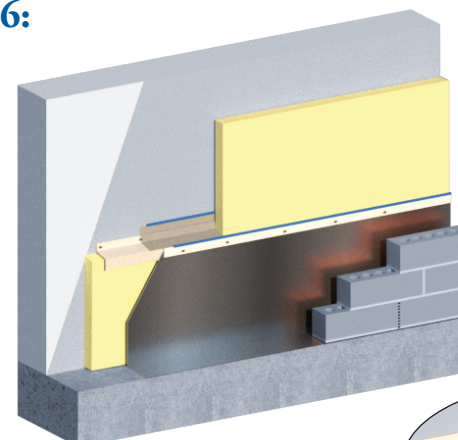


5:



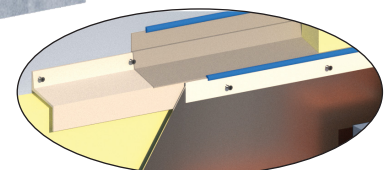
Install insulation on top of the Termination Bar Extender.

6:



Install your desired TWF on the downward leg of the Termination Bar Extender using a flat Termination Bar.

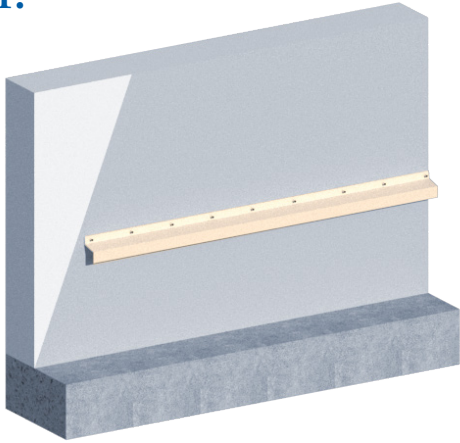
Fasten every 8" on center and seal the flat termination bar with a compatible sealant



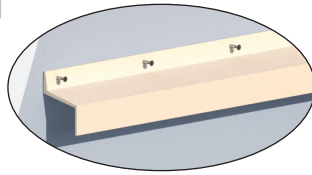
# Termination Bar Extender

## Installation Instructions Spray Foam Insulation

1:



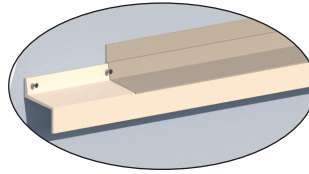
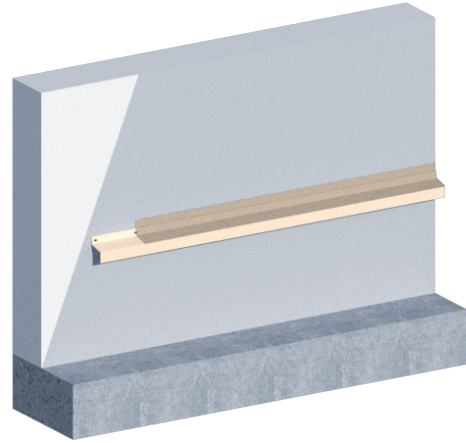
Determine the height you want your flashing to be and install the Termination Bar Extender at this location.



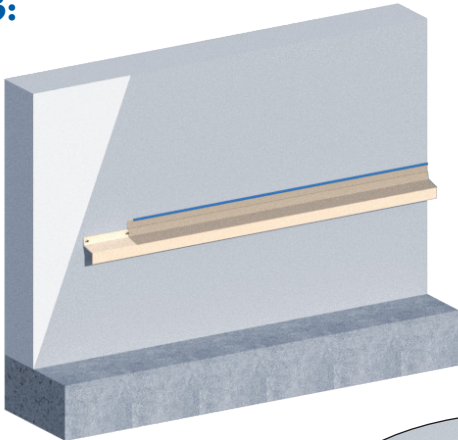
Steel Studs: Use blocking to attach in between the studs

2:

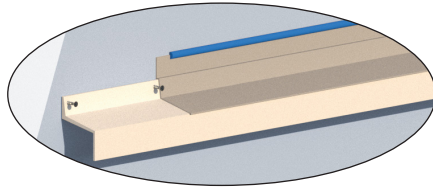
Install the MaxSeal transition membrane starting from the outer horizontal edge of the Termination Bar Extender.



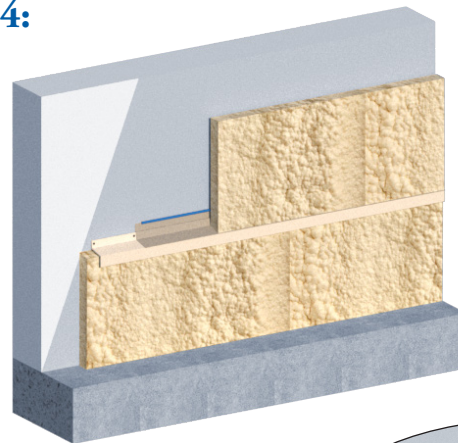
3:



Use a compatible sealant or T-96 Termination Bar to terminate the MaxSeal transition membrane.

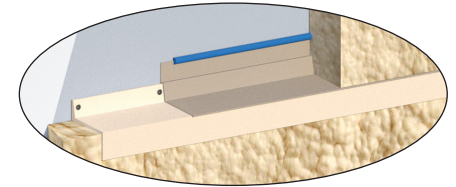


4:

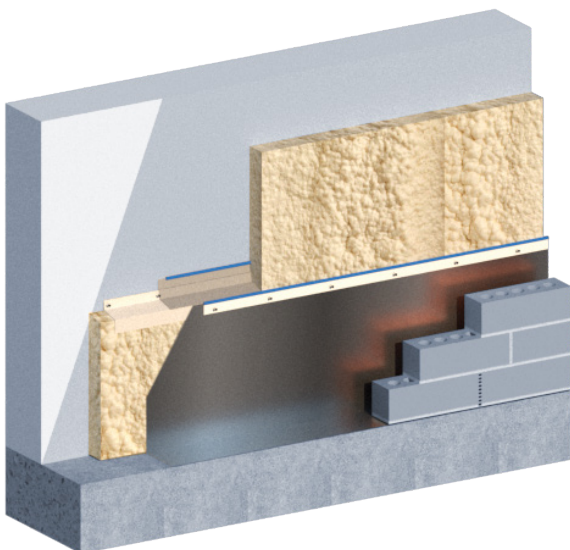


Install the spray foam insulation above and below the Termination Bar Extender

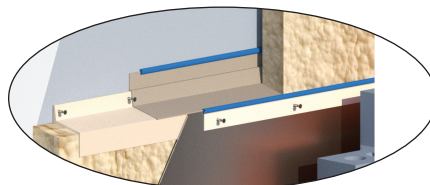
Steel Studs: Use blocking to attach in between the studs



5:



Install your desired TWF on the downward leg of the Termination Bar Extender using a flat Termination Bar.

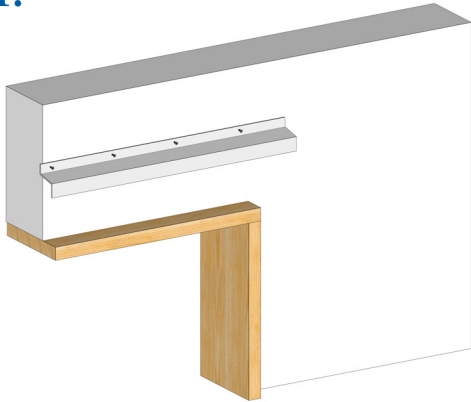


Fasten every 8" on center and seal the flat termination bar with a compatible sealant

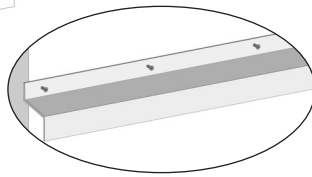
# Termination Bar Extender Installation Instructions

## Window Head- Loose Lintel with Spray Foam

1:



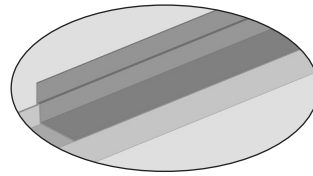
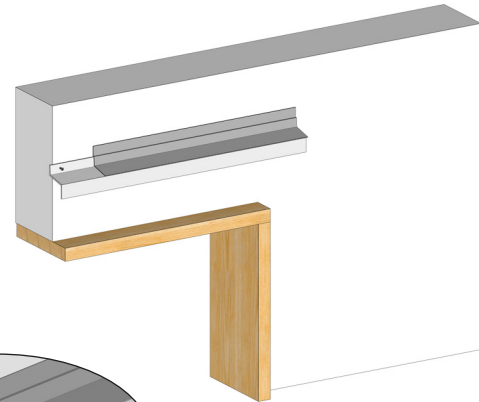
Determine the height you want your flashing to be and install the Termination Bar Extender at this location.



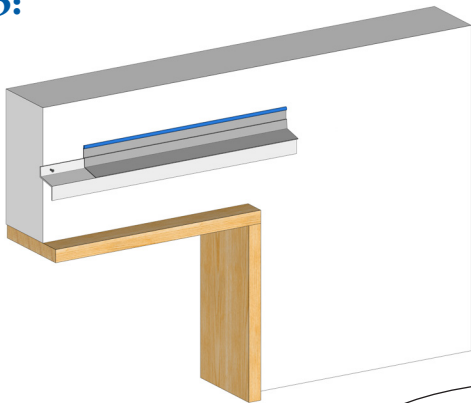
Steel Studs: Use blocking to attach in between the studs

2:

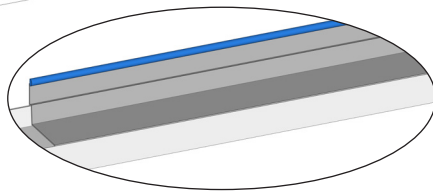
Install the MaxSeal transition membrane starting from the outer horizontal edge of the Termination Bar Extender.



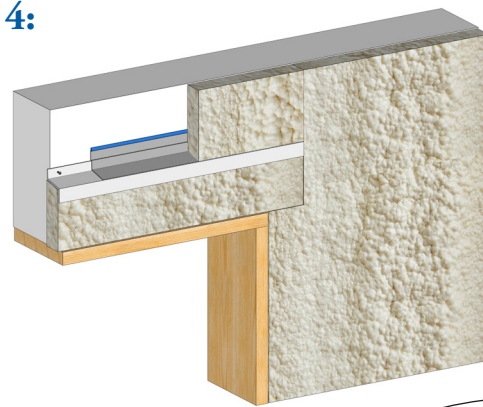
3:



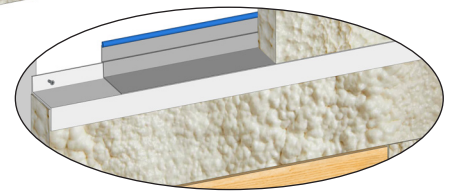
Use a compatible sealant or T-96 Termination Bar to terminate the MaxSeal transition membrane.



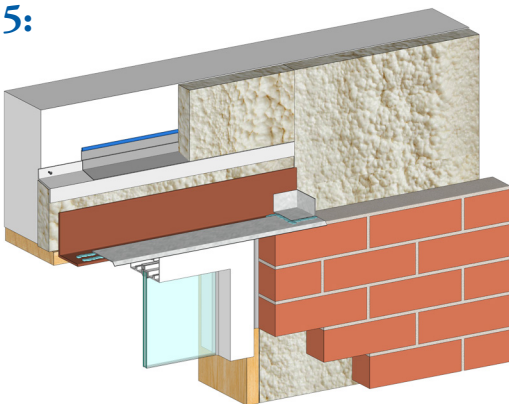
4:



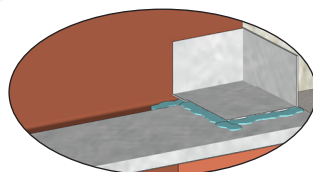
Install the spray foam insulation above and below the Termination Bar Extender



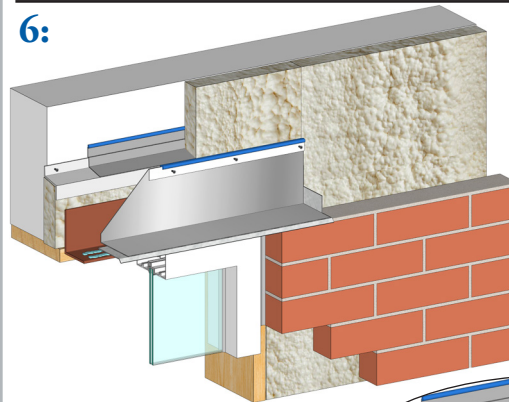
5:



Install the masonry, lintel, window, and through-wall flashing accessories with a compatible sealant.



6:



Install your desired TWF on the downward leg of the Termination Bar Extender using a flat Termination Bar.

Fasten every 8" on center and seal the flat termination bar with a compatible sealant

