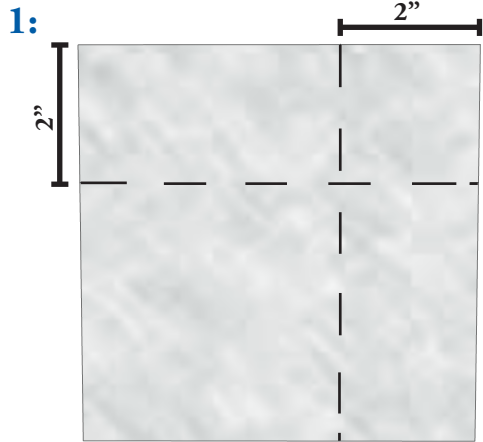


York 304 SA

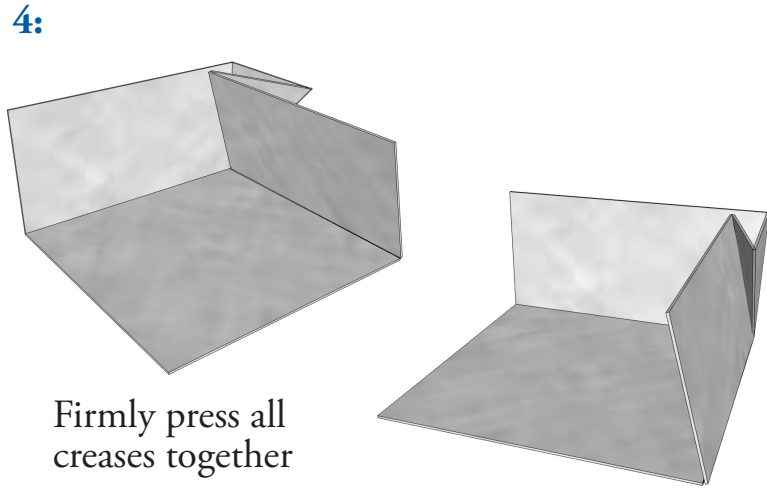
Self-Adhering Stainless Steel

How to Fold an End Dam

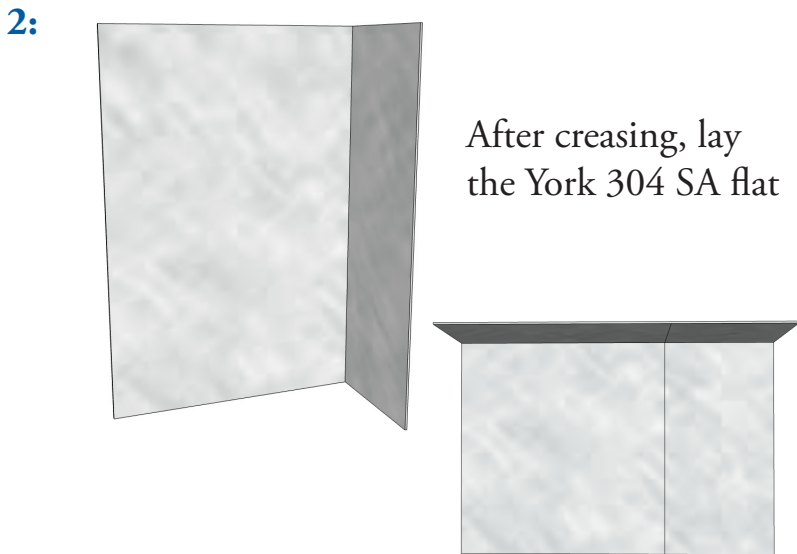
Commercial Application



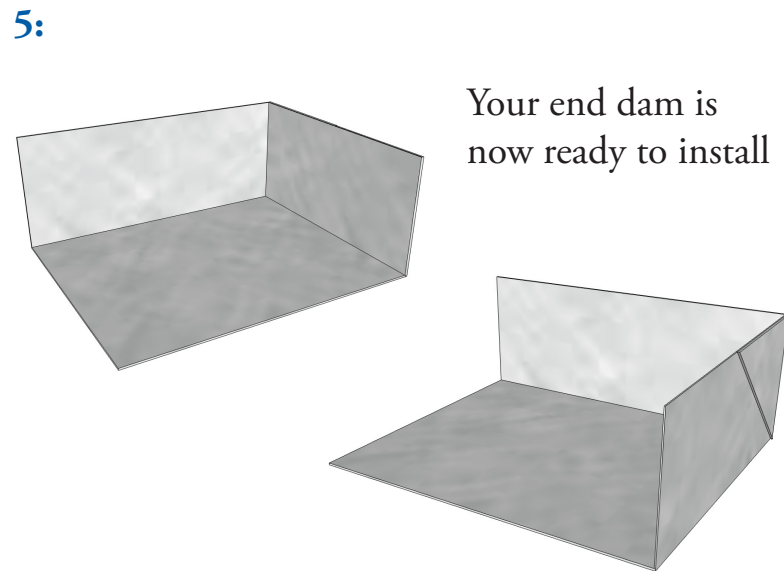
Fold the York 304 SA at the dotted lines (see figure 2)



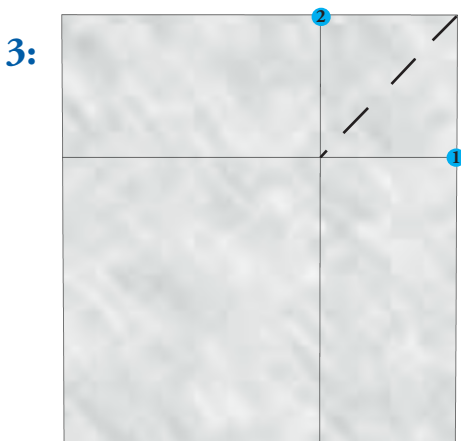
Firmly press all creases together



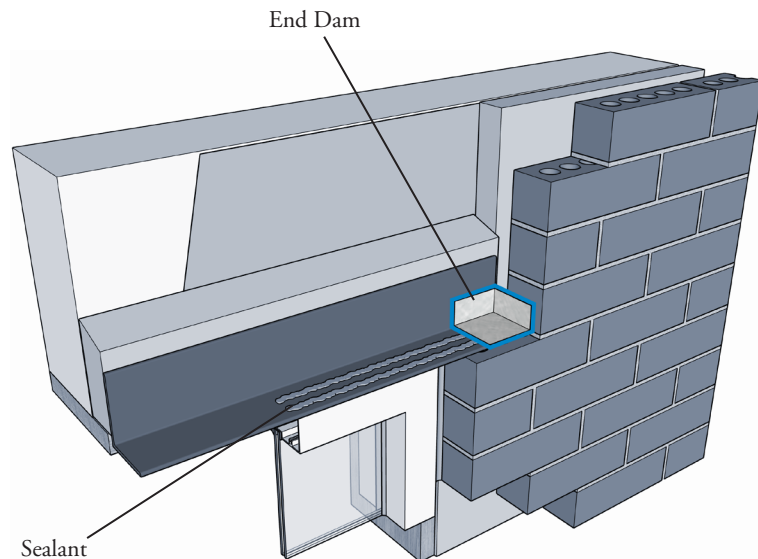
After creasing, lay the York 304 SA flat



Your end dam is now ready to install



Pull point 1 to point 2, while creasing on the diagonal dotted line



YORK
Flashings™