



Product Submittal

Flash-Vent™ 316 Stainless Steel

Description

Flexible 316 stainless steel drainage plane flashing. Does not clog, eliminating the need for mortar netting. Compatible with air barriers, spray polyurethane foams, insulations, and construction sealants. Flash-Vent has a life of the wall warranty

Description & Benefits:

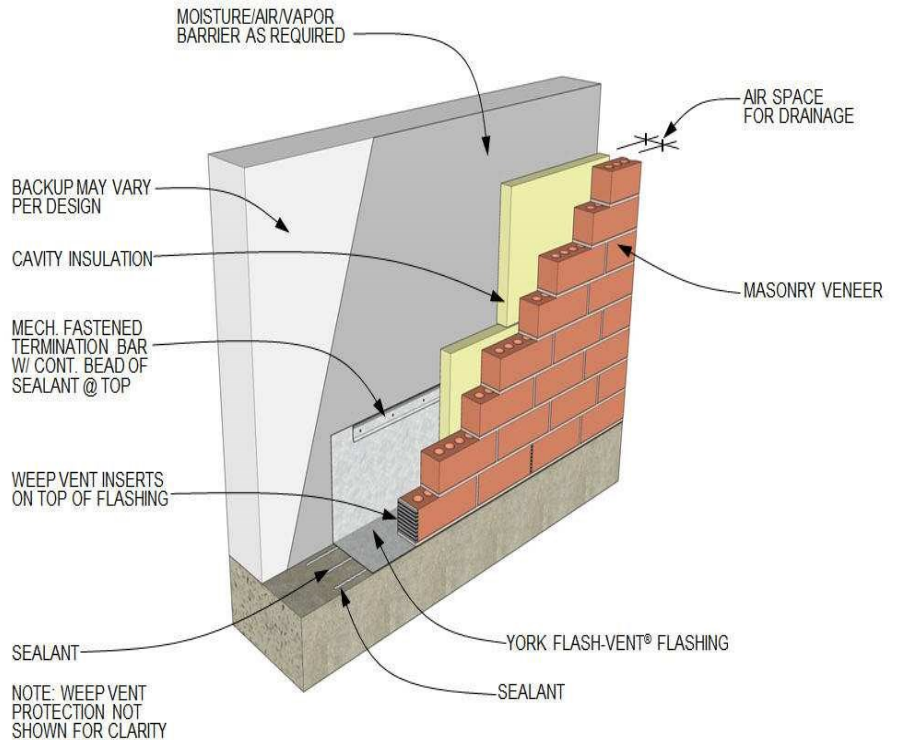
- Drainage plane flashing
- Provides a continuous weep vent
- Best in class puncture resistance
- Mold resistant: passes ASTM D3273
- Fire resistant: passes ASTM E84, Class A
- Life of the wall warranty
- Compatible with:
 - Air barriers
 - Spray Polyurethane Foam
 - Cavity wall insulations
 - Construction sealants
- Does not clog with mortar
- Eliminates need for mortar netting

Stainless Steel:

- Made of 60% recycled stainless steel
- Recyclable

Accessories:

- | | |
|--|--|
| <input type="checkbox"/> UniverSeal US-100 Sealant | <input type="checkbox"/> York 316 Self-Adhering Tape |
| <input type="checkbox"/> T-96 Termination Bar | <input type="checkbox"/> 316 Stainless Steel Drip Edge |
| <input type="checkbox"/> 316 SS Termination Bar | <input type="checkbox"/> Drip Edge 316 Stainless Steel Outside Corners |
| <input type="checkbox"/> Term-Clamp™ | <input type="checkbox"/> Drip Edge 316 Stainless Steel Inside Corners |
| <input type="checkbox"/> 316 Stainless Steel Outside Corners | <input type="checkbox"/> Stainless Steel Weep Vents |
| <input type="checkbox"/> 316 Stainless Steel Inside Corners | <input type="checkbox"/> Weep-Net™ (optional) |
| <input type="checkbox"/> 316 Stainless Steel End Dams | <input type="checkbox"/> Weep Armor™ (optional) |



Submittal Date: _____ Bid Date: _____

Project: _____

Project Address: _____

Contractor: _____ Phone: _____ E-mail: _____

Notes: _____

Architectural Firm: _____ Project Architect: _____

- Approved
- Not Approved

Remarks: _____